



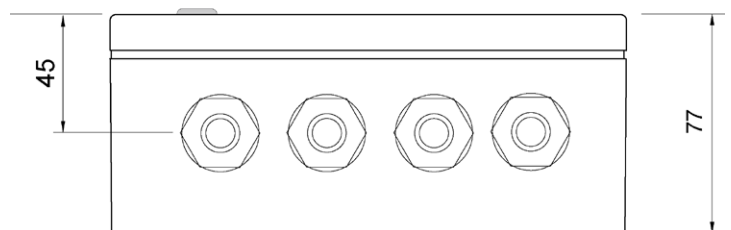
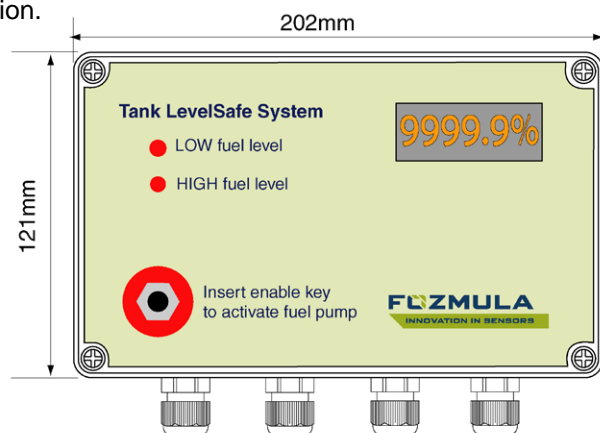
The **Model L110** is a highly accurate tank level control system and display. The controller receives a signal denoting the contents level from a sophisticated hydrostatic pressure transducer and displays it on a large OLED display. Designed to be used in large industrial fuel tanks, the controller can “see” the level when the tank is being refilled in real time and will automatically shut off the fuel delivery at a user determined level. Via the USB port the user can download data relating to fuel deliveries such as date, time, volume delivered and User ID. Also via the USB port, the user can configure the display units of measure, permissible users and tank level reduction rate to trigger an in built theft alarm. An optional GPRS module provides for a theft alarm to be sent to a remote location via SMS or the internet.

FEATURES

- > Continuous high visibility tank contents indication configured in either % or capacity.
- > User adjustable for 400 - 4000mm tank depths.
- > Secure operation via key fob ¼” plug.
- > Audible and visual warning of low fuel and overfill events.
- > Operates from 240 AC or 12/24 VDC
- > Real time clock/calendar with back-up battery.
- > Solid-state fuel pump control switch with pump stop protection & time-out facility.
- > Continuously monitors fuel level and alarms when rate of fuel reduction exceeds a preset maximum (Memory to capture fuel theft events).
- > Pulse flow meter input, to record volume of outgoing fuel deliveries.
- > USB connection to download information about fuel deliveries (date, time, volume delivered, User ID)*
- > Option to fit a GPRS module for remote alert of fuel theft event
- > 4 to 20 mA and 0 to 5 V outputs for remote level indication.

*Via USB connection to PC, the user can configure:

- > Display units (% or litres etc.)
- > Permissible Identification plug ins,
- > Flow meter pulse rate,
- > Tank volume at pump cut out point,
- > Down load information recorded
- > Set the fuel level reduction rate to trigger theft alarm.



TECHNICAL INFORMATION

Construction:

Enclosure: ABS
Cable glands: Stainless steel
Fasteners: A4 stainless steel

Mechanical (T/LL200 sensor):

Tank depth: 400mm to 4000mm. User adjustable to suit individual tank depth.

Outputs:

Signal: 0/5V or 4-20mA to remote indicator
Fuel pump enable: Up to 500W pump

Options:

Comms: GPRS module for remote monitoring of tank status
Data collection: Via USB port: flow meter pulse rate; tank volume at pump cut off point; download all collected data
Fuel flow input: Pulse flow meter input to record volume of outgoing fuel deliveries to permitted users.

Electrical:

Supply voltage: 240VAC or 12/24VDC
Display: High visibility OLED 9999.9 (15mm high) and user configurable for scaling
Tank level input: 0 – 5V
Flow rate input: Via float meter pulse unit

Environmental:

Max. pressure: 1.0 Bar
Operating temp: -20°C to +80°C
Sealing: IP65

Setup:

Via the USB port the user can configure:
Display units of measure; permissible identification plug-ins; fuel level reduction rate to trigger fuel theft/loss alarm